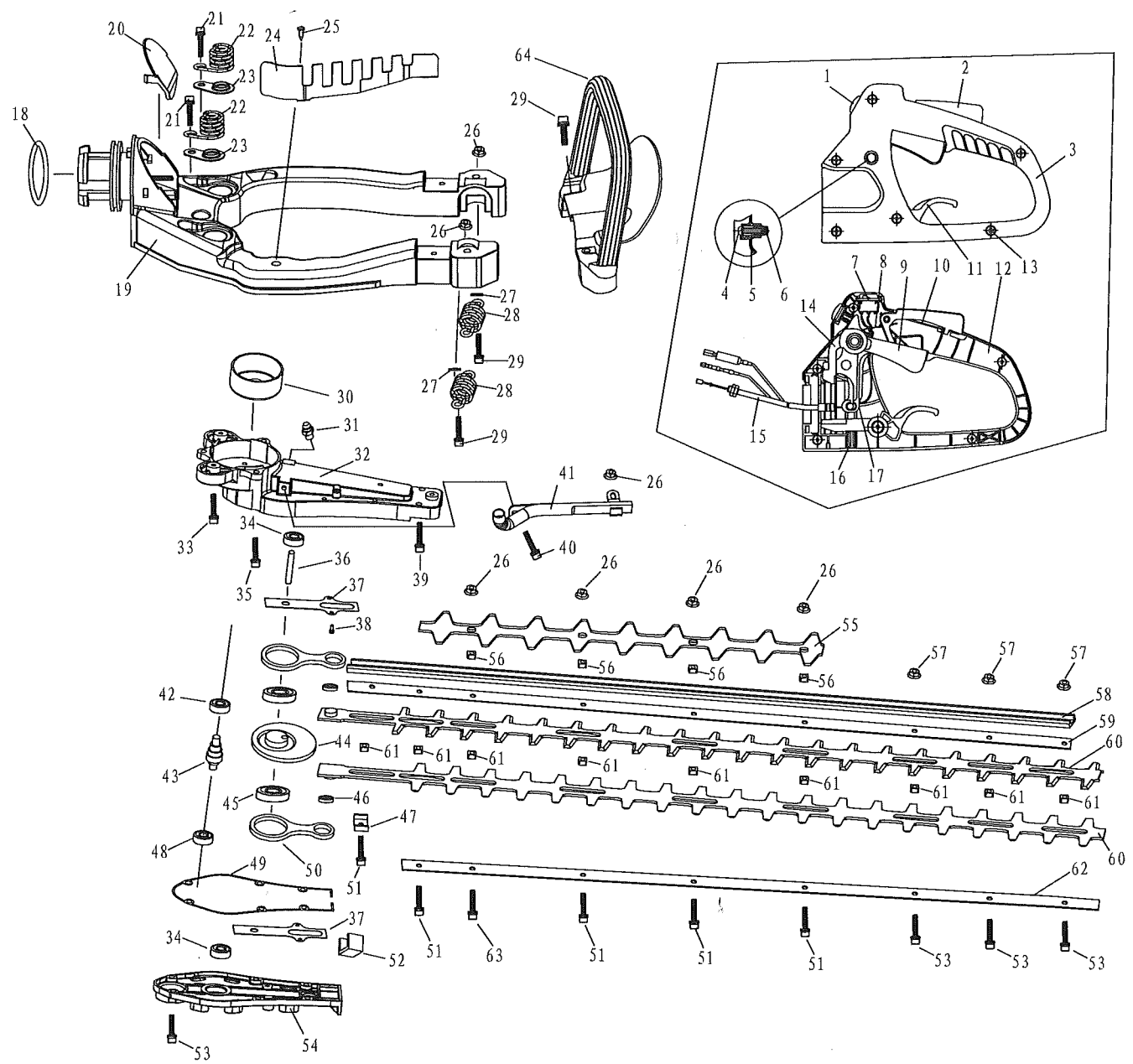


30/1/15 2: 9200929

9028

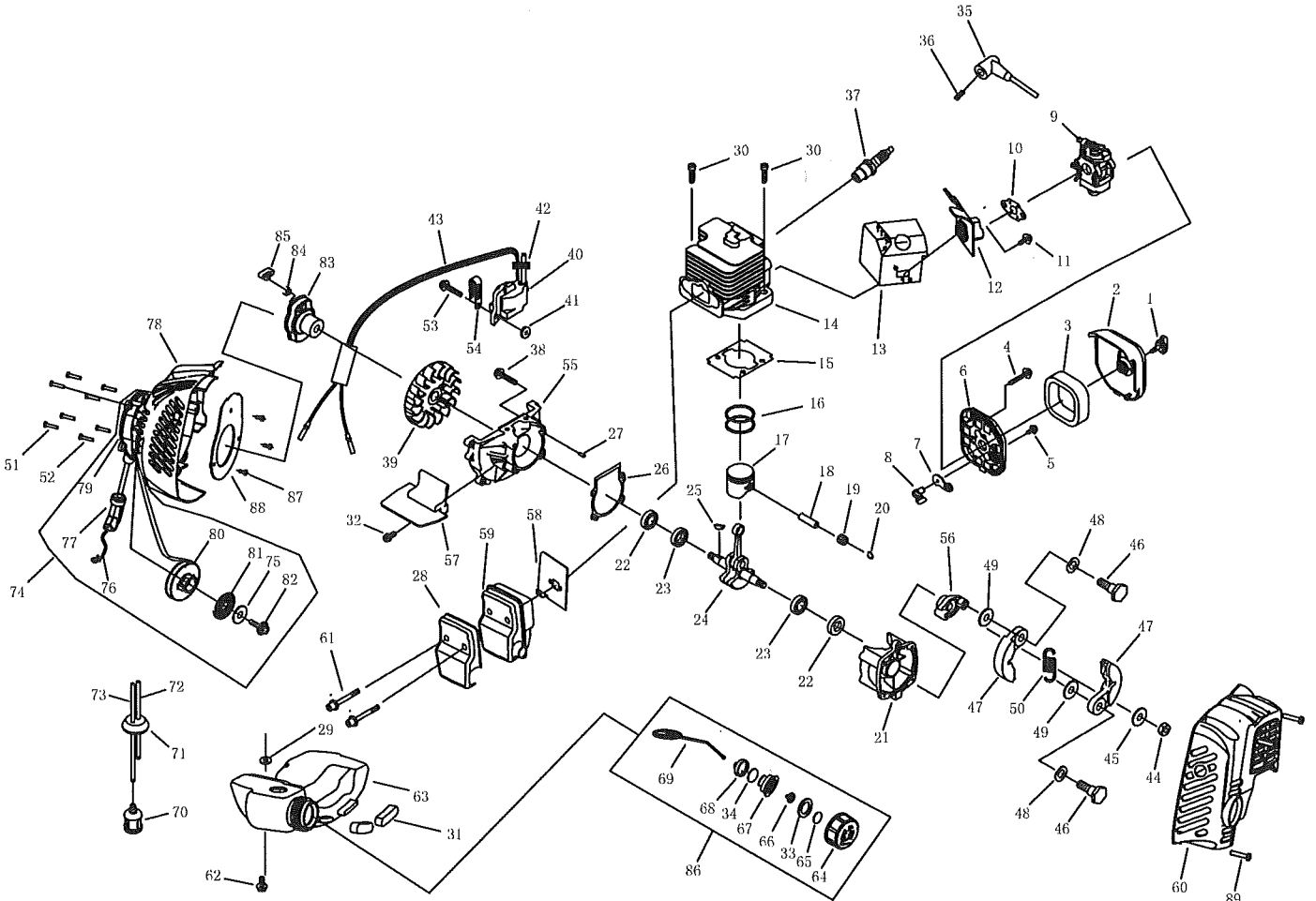
The Parts List of Model KM0409029 Hedge-Trimmer



No.	Part No.	Part Name	Qty	No.	Part No.	Part Name	Qty	No.	Part No.	Part Name	Qty
1	SLP600-E. 1-13	Plug	1	24	SLP600-E. 2. 3	Cover	1	47	SL750B. 1-5	Bracket	1
2	SLP600-E. 1-8	Handgrip	1	25	GB/T845	Screw ST4. 2 × 16	1	48	GB/T276	Bearing 628/P6	1
3	SLP600-E. 1-1	Handle, left	1	26	GB/T6183. 1	Nut M5	7	49	SL750B. 1-11A	Gasket	1
4	GB/T6560	Screw M4 × 25	1	27	GB/T96. 1	Washer	2	50	SL750B. 1-9	Grank Shaft	2
5	SLP600-E. 1-3	Spring	1	28	SLP600-E. 1-14	Spring	2	51	GB/T70. 1+GB/T93+GB/T97. 1	Screw M5 × 25	5
6	SLP600-E. 1-2	Lever, lock	1	29	GB/T70. 1+GB/T93+GB/T96. 1	Screw M5 × 25	4	52	SL750B. 1-10	Felt	1
7	SLP600-E. 1. 2	Switch	1	30	SLP600E. 3. 2A	Clutch Drum Comp.	1	53	GB/T70. 1+GB/T93+GB/T97. 1	Screw M5 × 20	9
8	SLP600-E. 1-7	Spring	1	31	GB/T1152	Fuel Cup M6	1	54	SL750B. 1-7	Case Cover	1
9	SLP600-E. 1-5	Lever, throttle	1	32	SLP600-E. 2-1	Wheel Box	1	55	SLP600-E. 2-2	Blade guard	1
10	SLP600-E. 1-9	Spring	1	33	GB/T70. 1+GB/T93+GB/T97. 1	Screw M5 × 12	2	56	SLP600S. 1-5	Spacer	4
11	SLP600-E. 1-10	Lever, gyral	1	34	GB/T276	Bearing 626/P6	2	57	GB889. 1	Nut M5	3
12	SLP600-E. 1-4	Handle, right	1	35	GB/T70. 1+GB/T93+GB/T97. 1	Screw M5 × 16	3	58	SLP600S. 1-2	Plate, upper	1
13	GB/T845	Screw ST4. 2 × 16	6	36	SL750S. 1-7	Shaft	1	59	SLP600S. 1-3	Cushion	1
14	SLP600-E. 1-6	Lever	1	37	SL750B. 1-4	Cushion	2	60	SLP600-E. 2. 1	Blade	2
15	SLP600S. 1. 1	Cable comp.	1	38	GB/T70. 1	Screw M4 × 10	4	61	SL750B. 1-12	Spacer	9
16	SLP600-E. 1-11	Spring	1	39	GB/T70. 1+GB/T93+GB/T96. 1	Screw M5 × 16	2	62	SLP600S. 1-1	Plate, lower	1
17	SLP600-E. 1-12	Spring	1	40	GB/T70. 1+GB/T93+GB/T97. 1	Screw M5 × 12	1	63	GB/T70. 1+GB/T93+GB/T97. 1	Screw M5 × 30	1
18	JB/T7757. 2	Seal 48. 7 × 3. 1	1	41	SLP600-E. 2. 2	Pipe, exhaust	1	64	SLP600-E. 3	Handle Front	1
19	SLP600-E. 1. 3	Frame	1	42	GB/T276	Bearing 6001-2RS/P6	1				
20	SLP600-E. 1-17	Frame Lid	1	43	SL750C. 2-1	Gear Shaft	1				
21	GB/T70. 1+GB/T93+GB/T96. 1	Screw M5 × 20	2	44	SL750B. 1-2A	Gear and Brace Ass'y	1				
22	SLP600-E. 1-15	Spring	2	45	GB/T276	Bearing 61805-2RZ	2				
23	SLP600-E. 1-16	Washer	2	46	GB/T276	Bearing 61800-2RS	2				

304/15
2-GEILACFA2

The Parts List of Model 1E32FL-S Gasoline Engine



NO.	PART NO.	PART NAME	QTY.	NO.	PART NO.	PART NAME	QTY.	NO.	PART NO.	PART NAME	QTY.
1	1E34F. 1. 2A	Screw	1	32	GB/T9074. 4	Screw Assemblies M4×14	1	63	1E32FL-S. 6-1	Fuel Tank	1
2	1E32FL-S. 1-1	Outside Cover	1	33	P40. 12. 1-7	Filter Net	1	64	P40. 12. 1-1	Fuel Tank Lid	1
3	1E34F. 1-1	Filter Net	1	34	P40. 12. 1-6	Valve B	1	65	P40. 12. 1-3	Gasket	1
4	GB/T9074. 4	Screw M5x55	2	35	1E34F. 5-2	Cap	1	66	EB-415. 4. 1. 1-1	Inlet	1
5	GB/T845-ST4. 2×12-F-H	Screw	1	36	1E40F-3A. 8-2	Spring	1	67	P40. 12. 1-2	Inside Lid	1
6	1E34F. 1. 1. 1	Inside Cover	1	37	L9T	Spark Plug	1	68	P40. 12. 1-4	Inside Lid	1
7	1E34F. 1-3	Choke	1	38	GB/T70. 1+GB/T93+GB/T97	Screw Assemblies M5×25	4	69	P40. 12. 1-5	Chain	1
8	1E32FL-S. 1. 1-1	Choke Handle	1	39	1E32FL-S. 8-1	Fly Wheel	1	70	1E34F. 9. 2-3D	Cleaner Cover	1
9	1E32FL. 7A	Carburetor	1	40	1E32FL. 5. 2	Coil	1	71	EB-415. 4. 2-2	Plug	1
10	1E34F-1	Gasket	1	41	1E32FL-6	Gasket	2	72	EB-415. 4. 2-4	Fuel Pipe	1
11	GB/T70. 1+GB/T93+GB/T97	Screw Assemblies M5×20	2	42	1E34F. 5-1	Rubber Plug	1	73	CG420. 1. 3. 2-2	Fuel Pipe	1
12	1E32FL-S. 2	Admitting Pipe Ass'y	1	43	1E34F. 5. 1	Cord Comp.	1	74	1E32FL-S. 4	Starter	1
13	1E32FL-S-4	Gasket	1	44	GB/T6171	Nut M8×1	1	75	GB/T96	Washer 5	1
14	1E34FL-1	Cylinder	1	45	GB/T97. 1	Washer 8	1	76	1E34F. 11-3	Rope	1
15	1E34F-9	Gasket	1	46	1E34F-12	Screw Pin	2	77	1E36F. 1A-1	Start Handle	1
16	1E34F. 6-5	Piston Ring	1	47	1E34F. 10. 1	Expander Ass'y	2	78	1E32FL-S. 5	Guide Cover	1
17	1E34F. 6A-1	Piston	1	48	1E34F-13	Washer	2	79	1E32FL-S. 4. 1	Start Cover Ass'y	1
18	1E34F. 6-3	Piston Pin	1	49	1E34F-11	Washer	2	80	1E34F. 11-2	Start Rope Reel	1
19	1E31F. 4. 1	Bearing	1	50	1E34F. 10-1	Spring	1	81	1E34F. 11-1	Recoil Spring	1
20	1E34F. 6-2	Ring	2	51	GB/T845	Screw ST4. 8×16-F	4	82	GB/T9074. 6	Screw M5×10	1
21	1E32FL. 4-1	Crank Case	1	52	GB/T70. 1+GB/T93+GB/T97	Screw Assemblies M5×16	4	83	1E32FL. 2. 1	Start Reel	1
22	1E36F. 2	Seal	2	53	GB/T9074. 4	Screw M4×20	2	84	1E34F. 8-1	Start Claw	1
23	GB/T 276	Bearing 6001/P5	2	54	1E40F-3A. 9	Clip	1	85	1E34F. 8-2	Start Spring	1
24	1E32FL. 3A. 1	Crank Shaft	1	55	1E32FL. 4-2	Crank Case	1	86	P40. 12. 1	Fuel Tank Lid Ass'y	1
25	1E40FP-3Z. 3-1	Key	1	56	1E32FL-3	Stand	1	87	GB/T845	Screw ST4. 2×9-F	3
26	1E34F. 7-2	Gasket	1	57	1E32FL-8	Gasket	1	88	1E32FL-S. 5-2	Gasket	1
27	GB/T119. 2	Pin 3×10	2	58	1E32FL-S-3	Gasket	1	89	GB/T845	Screw ST4. 2×16-F	3
28	1E34FL-3E-3	Cover	1	59	1E32FL. 1	Muffler Ass'y	1				
29	1E33F-4	Gasket	1	60	1E32FL-S. 3	Guide Cover	1				
30	GB/T70. 1	Screw M5×20	2	61	GB/T70. 1+GB/T93+GB/T97	Screw Assemblies M5×50-10. 9	2				
31	1E32FL-S-2	Rubber Cover	2	62	GB/T70. 1+GB/T93+GB/T97	Screw Assemblies M5×20	1				