

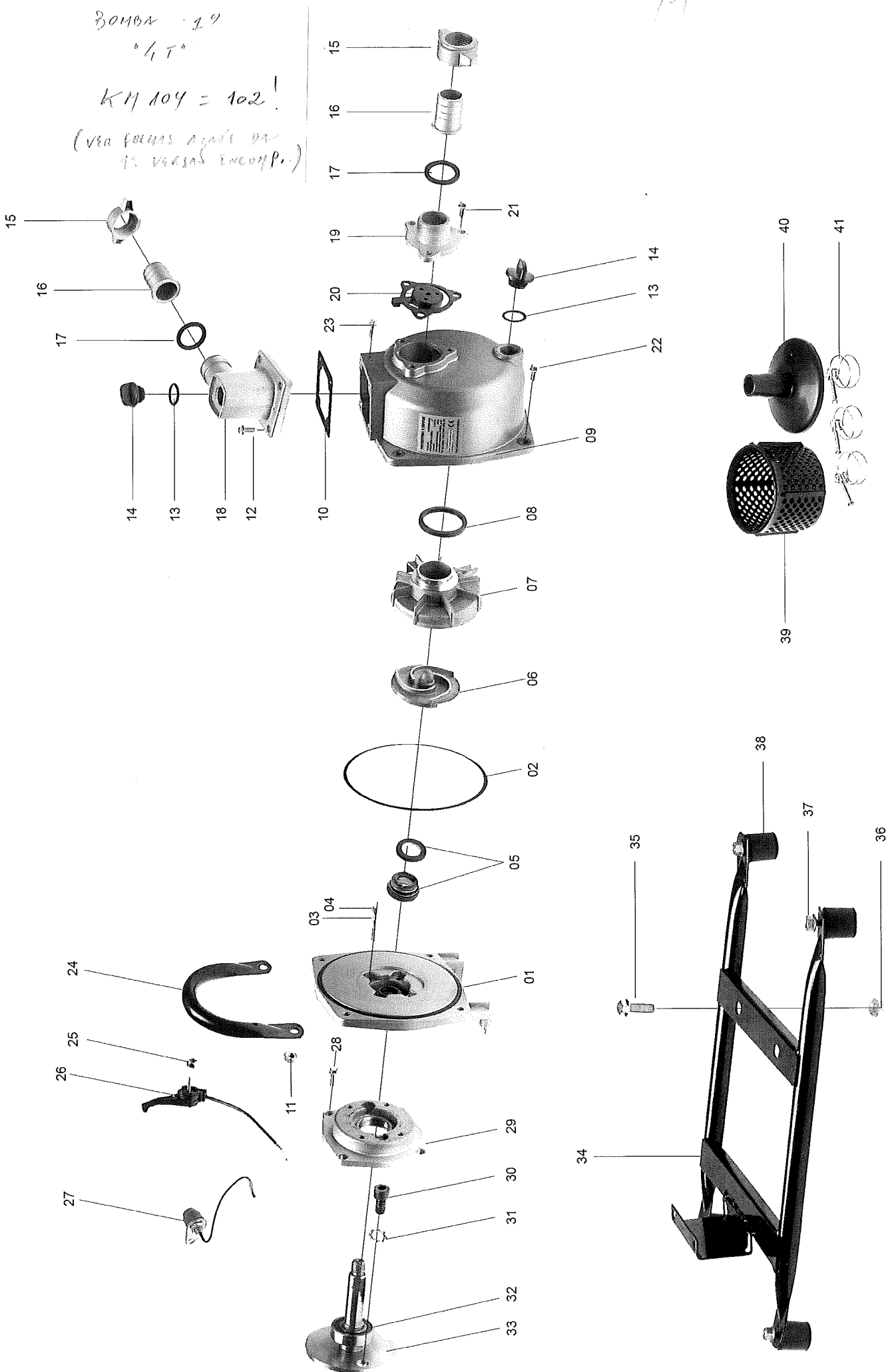
BOMBA 14

1/4 T"

KM 104 = 102!

(VIA FORMAS APTAS DA
1.2. VERGAS ENCOMP.)

104

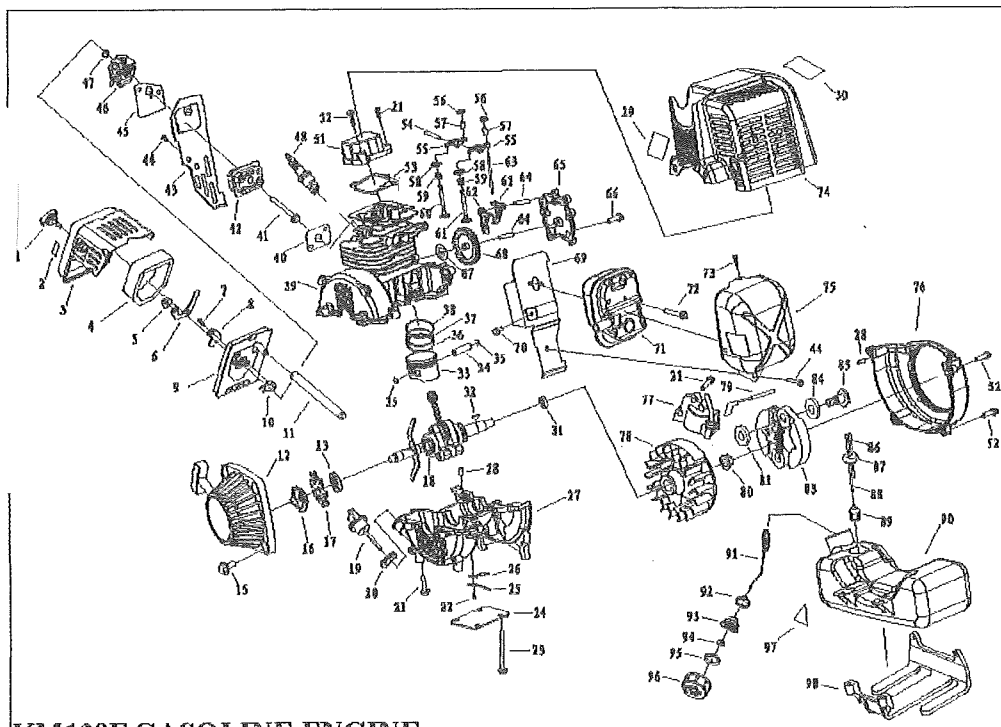


SPARE PARTS LIST OF KM0404104 (PUMP)

PAGE:1

Fig.NO.	PART NO.	DESCRIPTION	QTY	Fig.NO.	PART NO.	DESCRIPTION	QTY
1	KM0404104P-1	PUMP COVER	1	26	KM0404104P-26	THROTTLE SWITCH	1
2	KM0404104P-2	O RING	1	27	KM0404104P-27	STOP SWITCH	1
3	KM0404104P-3	SEALED WASHER	1	28	KM0404104P-28	SCREW M6*18	4
4	KM0404104P-4	SCREW M6*45	4	29	KM0404104P-29	CONNECTOR A	1
5	KM0404104P-5	MECHANICAL SEAL	1	30	KM0404104P-30	SCREW M8*16	2
6	KM0404104P-6	IMPELLER	1	31	KM0404104P-31	WASHER	2
7	KM0404104P-7	DIFFUSER	1	32	KM0404104P-32	BEARING	1
8	KM0404104P-8	O RING	1	33	KM0404104P-33	CONNECTOR B	1
9	KM0404104P-9	PUMP BODY	1	34	KM0404104P-34	PEDESTAL	1
10	KM0404104P-10	OUTLET SEALED WASHER	1	35	KM0404104P-35	SCREW M8*20	2
11	KM0404104P-11	NUT M8	2	36	KM0404104P-36	NUT M8	2
12	KM0404104P-12	SCREW M6*18	4	37	KM0404104P-37	NUT M8	4
13	KM0404104P-13	O RING	2	38	KM0404104P-38	CUSHION	4
14	KM0404104P-14	WHORL PLUG	2	39	KM0404104P-39	WATER FILTER	1
15	KM0404104P-15	SANNER	2	40	KM0404104P-40	WATER FILTER CAP	1
16	KM0404104P-16	PIPE	2	41	KM0404104P-41	CLAMP	3
17	KM0404104P-17	SEALED WASHER	2				
18	KM0404104P-18	OUTLET FLANGE	1				
19	KM0404104P-19	INLET FLANGE	1				
20	KM0404104P-20	CHECK VALVE	1				
21	KM0404104P-21	SCREW M6*18	3				
22	KM0404104P-22	SCREW M8*20	2				
23	KM0404104P-23	SCREW M8*30	2				
24	KM0404104P-24	HANDLE	1				
25	KM0404104P-25	NUT M5	1				

Motiva H/BOYSC
 45 20
 KM 104



KM139F GASOLINE ENGINE

NO.	Part NO.	Part Name	Qty	NO.	Part NO.	Part Name	Qty	NO.	Part NO.	Part Name	Qty
1	1E34F. 1. 2	Screw	1	35	1E31F. 4-3	Ring	2	70	GB/T9074. 5	Screw M5 × 8	1
2	1E40F-3A. 3-5	Sign	1	36	139F. 9. 3	Oil ring	1	71	139F. 4	Muffler	1
3	139F. 2. 1-2	Outside Cover	1	37	139F. 9-5	Second Piston Ring	1	72	GB/T9074. 13	Screw M5 × 50	2
4	139F. 2. 1-1	Filter Net	1	38	139F. 9-4	First Piston Ring	1	73	GB/T9074. 6	Screw M5 × 16	1
5	GB/T6177. 1	Nut M5	2	39	139F. 7. 1	Cylinder	1	74	139F. 3	Cylinder Cover	1
6	139F. 2. 1. 1-3	Baffle	1	40	139F. 2-3	Admitting Gasket	1	75	139F-1	Muffler Cover	1
7	GB/T845	Screw S74. 2 × 12-F-H	1	41	GB5780	Screw M5 × 25	2	76	139F-3	Fly Wheel Cover	1
8	139F. 2. 1. 1-2	Choke	1	42	139F. 2-2	Admitting Pipe	1	77	KM0404104E-77 COIL		
9	139F. 2. 1. 1. 1	Inside Cover	1	43	139F-6	Board	1	78		Fly Wheel	1
10	139F. 2. 1. 1-1	Choke Handle	1	44	GB/T9074. 5	Screw M5 × 8	4	79	139F. 5. 1	Parking	1
11	139F. 2-4	Windpipe	1	45	139F. 2-1	Gasket	1	80	GB/T6177. 2	Nut M10 × 1. 25	1
12	139F. 10A	Starter	1	46	139F. 2. 2	Carburetor	1	81	1E36F-3	Gasket	2
13	139F. 8	Seal	1	47	GB2452. 1	O Ring 5 × 2. 65	1	83	1E40F-5. 6A	Expander	1
15	GB/T9074. 13	Screw M5 × 20	10	48	A58TC	Spark Plug	1	84	1E40F-5-11	Washer	2
16	139F. 9-2A	Start Reel	1	51	139F. 11	Cylinder Cover	1	85	1E40F-5-12	Screw Pin	2
17	139F. 9-1	Fan	1	52	GB/T9074. 13	Screw M5 × 25	6	86		Fuel Pipe	1
18	139F. 9. 1	Crank Shaft	1	53	139F-5	Cylinder Cover Gasket	1	87	1E36FF. 8. 1-1	Plug	1
19	142F-9	Dipstick	1	54	139F. 7-8	Rocker Pin	1	88		Fuel Pipe	1
20	142F-10	Seal	1	55	139F. 7-7	Rocker	2	89	1E34F. 9. 2-3B	Cleaner	1
21	GB/T9074. 13	Screw M5 × 16	7	56	139F. 7-5	Adjust Nut	2	90	139F. 1-1	Fuel Tank	1
22	GB/T9074. 4	Screw M3 × 3	1	57	139F. 7-6	Lub Seat	2	91	1E32FL. 6. 2-4	Chain	1
23	GB/T9074. 13	Screw M5 × 55	4	58	142F. 9-2	Spring Seat	2	92	1E32FL. 6. 2-3	End Cover	1
24	139F-4	Board	1	59	139F. 7-10	Spring	2	93	1E32FL. 6. 2-2	Inside Cover	1
25	139F. 7-18	Board	1	60	139F. 7-12	Input Valve	1	94	BB-415. 4. 1. 1-1	Inlet	1
26	139F. 7-19	Reed	1	61	139F. 7-11	Output Valve	1	95	CG420. 1. 3. 1-2	Gasket	1
27	139F. 7-16	Crank Case	1	62	139F. 7-3	Below Rocker	2	96	139F. 1. 1-1	Fuel Tank Lid	1
28	GB119. 1	Pin B4 × 8	3	63	139F. 7-4	Lub	2	97	3WF-8-7	Fire Sign	1
29	139F-9A	Oil Sign	1	64	139F. 7-2	Pin	2	98	139F-10	Fuel Tank Hog	1
30	BB-650-9	Sign	1	65	139F. 7-1	Cover	1				
31	139F. 6	Seal	1	66	GB/T9074. 4	Screw M4 × 16	5				
32	GB1099	Key 3 × 5 × 13	1	67	139F. 7-21	Board	1				
33	139F. 9. 2	Piston	1	68	139F. 7-22	Can Wheel	1				
34	139F. 9-5	Piston Pin	1	69	139F. 12	Board	1				