

---

# PARTS CATALOG

---



# Diesel Engine Pump

Model

**PTD 306**

**PTD 206T**

 **FUJI HEAVY INDUSTRIES LTD.**

---

ISSUE EMD-PP0643

---

FIG. 1A PUMP (PTD306)

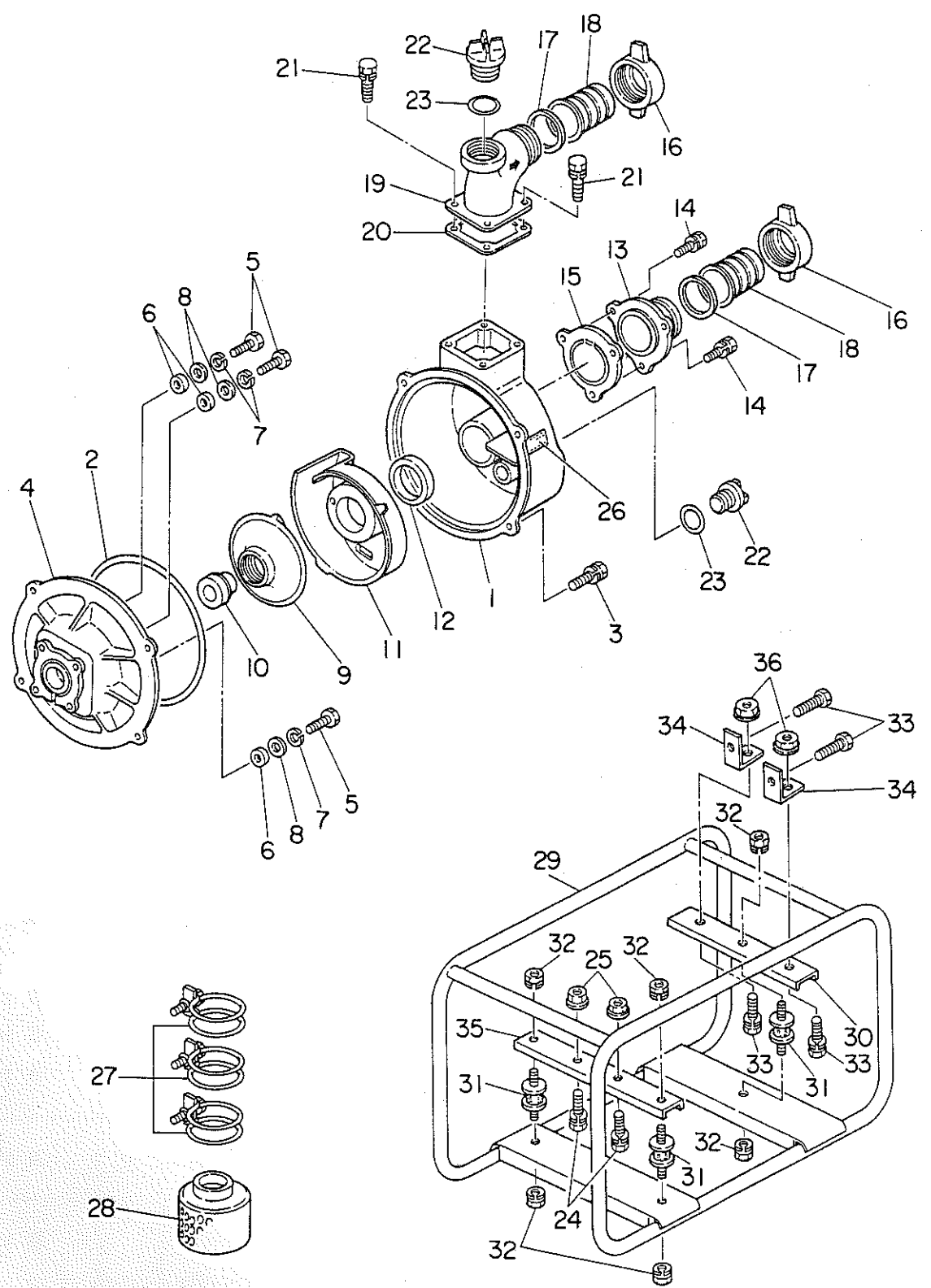


FIG. 1A PUMP (PTD306)

Interchangeability

Ref. No.	Parts Number	Description	Q'ty	Execution
1	481-00001-09	CASING	1	
2	480-05010-02	PACKING, casing	1	
3	001-14103-00	BOLT and WASHER ASS'Y (M10×30)	4	
4	480-05010-04	CASING COVER	1	
5	480-05010-05	BOLT (M8×48)	4	
6	480-05010-06	SEAL PACKING	4	
7	003-20080-00	SPRING WASHER (M8)	4	
8	003-11080-00	WASHER (M8)	4	
9	481-00000-92	IMPELLER	1	
10	480-05010-10	MECHANICAL SEAL	1	
11	480-08010-11	INNER CASING	1	
12	480-08010-12	PACKING, inner casing	1	
13	480-08010-13	SUCTION FLANGE	1	
14	001-14083-00	BOLT and WASHER ASS'Y (M8×30)	3	
15	480-08010-15	CHECK VALVE	1	
16	480-08010-16	COUPLING	2	
17	480-08010-17	PACKING, coupling	2	
18	481-00001-08	NIPPLE	2	
19	480-08010-19	DELIVERY FLANGE	1	
20	480-08010-20	PACKING, delivery flange	1	
21	001-14082-50	BOLT and WASHER ASS'Y (M8×25)	4	
22	480-05010-21	PLUG	2	
23	480-05010-22	PACKING, plug	2	
24	001-13104-50	BOLT and WASHER ASS'Y (M10×45)	2	
25	002-38100-00	FLANGE NUT (M10)	2	
26	482-00052-03	LABEL, pump name	1	
27	480-08010-28	HOSE BAND	3	
28	480-08010-29	STRAINER	1	
29	481-00000-93	FRAME	1	
30	481-00000-94	BASE, pump side	1	
31	480-08210-19	CUSHION RUBBER	3	
32	480-10010-24	NUT and WASHER ASS'Y (M8)	6	
33	001-14082-00	BOLT and WASHER ASS'Y (M8×20)	4	
34	481-00000-95	BRACKET	2	
35	481-00000-96	BASE, engine side	1	
36	002-38080-00	FLANGE NUT	2	

When ordering parts ; Always give the Model, Specification and Serial Number of Pump.

FIG. 1B PUMP (PTD206T)

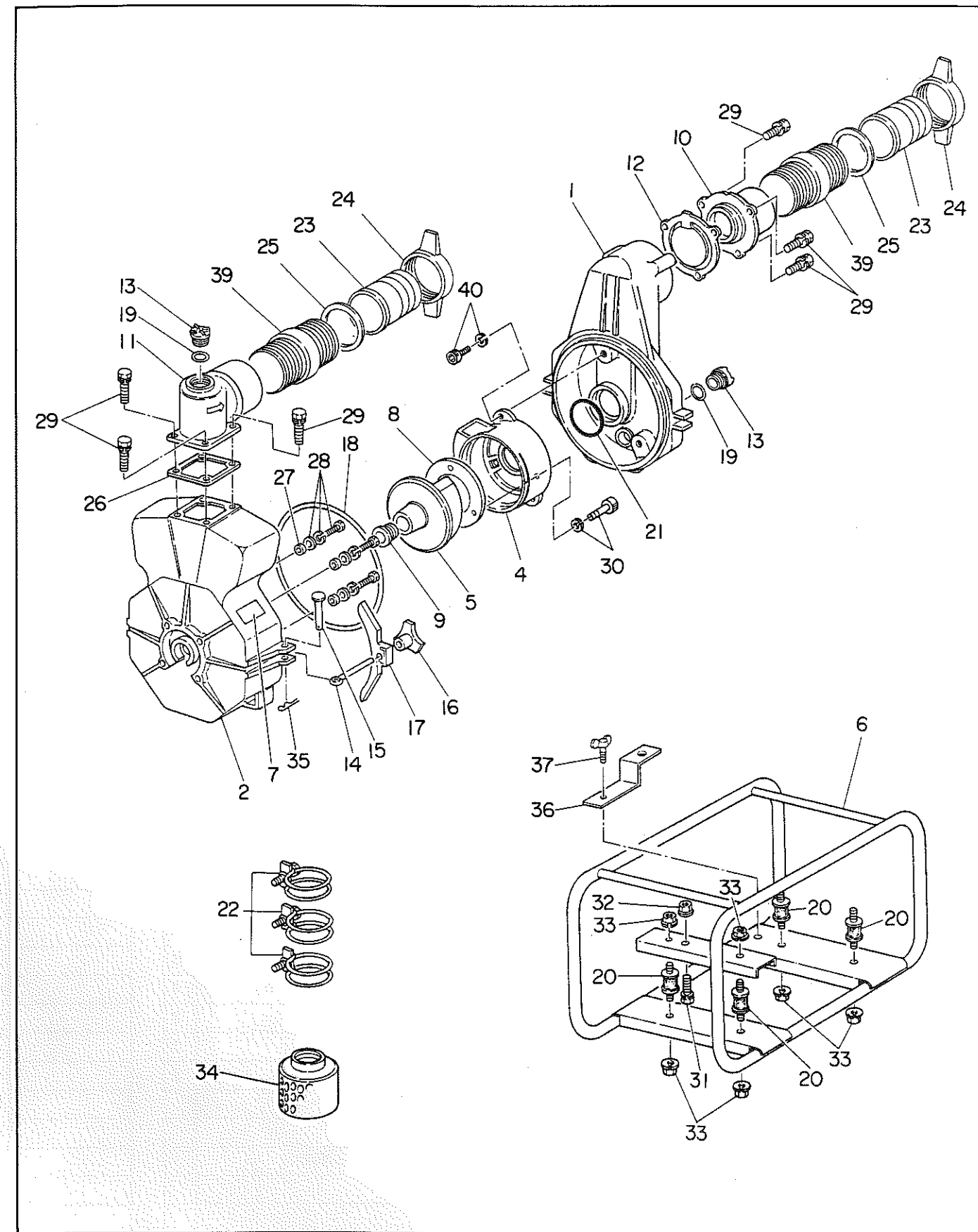


FIG. 1B PUMP (PTD206T)

Ref. No.	Parts Number	Description	Q'ty	Interchangeability	
				Execution	Execution
1	481-00000-62	CASING	1		
2	480-05210-02	CASING COVER	1		
4	481-00000-63	INNER CASING	1		
5	480-05210-04	IMPELLER	1		
6	481-00001-02	FRAME	1		
7	482-00044-03	LABEL, pump name	1		
8	481-00000-64	LINER	1		
9	480-05210-08	MECHANICAL SEAL	1		
10	481-00000-65	SUCTION FLANGE	1		
11	481-00000-66	DELIVERY FLANGE	1		
12	481-00000-67	CHECK VALVE	1		
13	480-05010-21	PLUG	2		
14	480-05210-13	COVER BOLT	2		
15	480-05210-14	RIVET	2		
16	480-05210-15	KNOB	2		
17	480-05210-16	CASING COVER HOLDER	2		
18	480-05210-17	PACKING, casing	1		
19	480-05010-22	"O" RING	2		
20	480-05210-19	CUSHION RUBBER	4		
21	480-05210-20	"O" RING, inner casing	1		
22	480-05010-28	HOSE BAND	3		
23	480-05210-22	NIPPLE (AL)	2		
24	480-05210-23	COUPLING (AL)	2		
25	480-05010-17	PACKING, nipple	2		
26	480-05010-20	PACKING, delivery flange	1		
27	480-05010-06	SEAL PACKING	4		
28	480-05210-27	BOLT and WASHER ASS'Y (M8x48)	4		
29	001-14082-50	BOLT and WASHER ASS'Y (M8x25)	7		
30	480-05210-29	SOCKET BOLT (M6x16)	3		
31	001-14084-00	BOLT and WASHER ASS'Y (M8x40)	2		
32	002-38080-00	FLANGE NUT (M8)	2		
33	480-10010-24	NUT and WASHER ASS'Y (M8)	6		
34	480-05210-33	STRAINER	1		
35	480-05210-34	SPRING PIN	2		
36	480-05210-35	SUPPORT	1		
37	480-05210-36	WING BOLT (M6x15)	1		
39	480-05310-30	NIPPLE (NPTxPF)	2		
40	480-05210-29	SOCKET BOLT (M6x16)	2		

When ordering parts ; Always give the Model, Specification and Serial Number of Pump.

FIG. 2 CRANKCASE GROUP

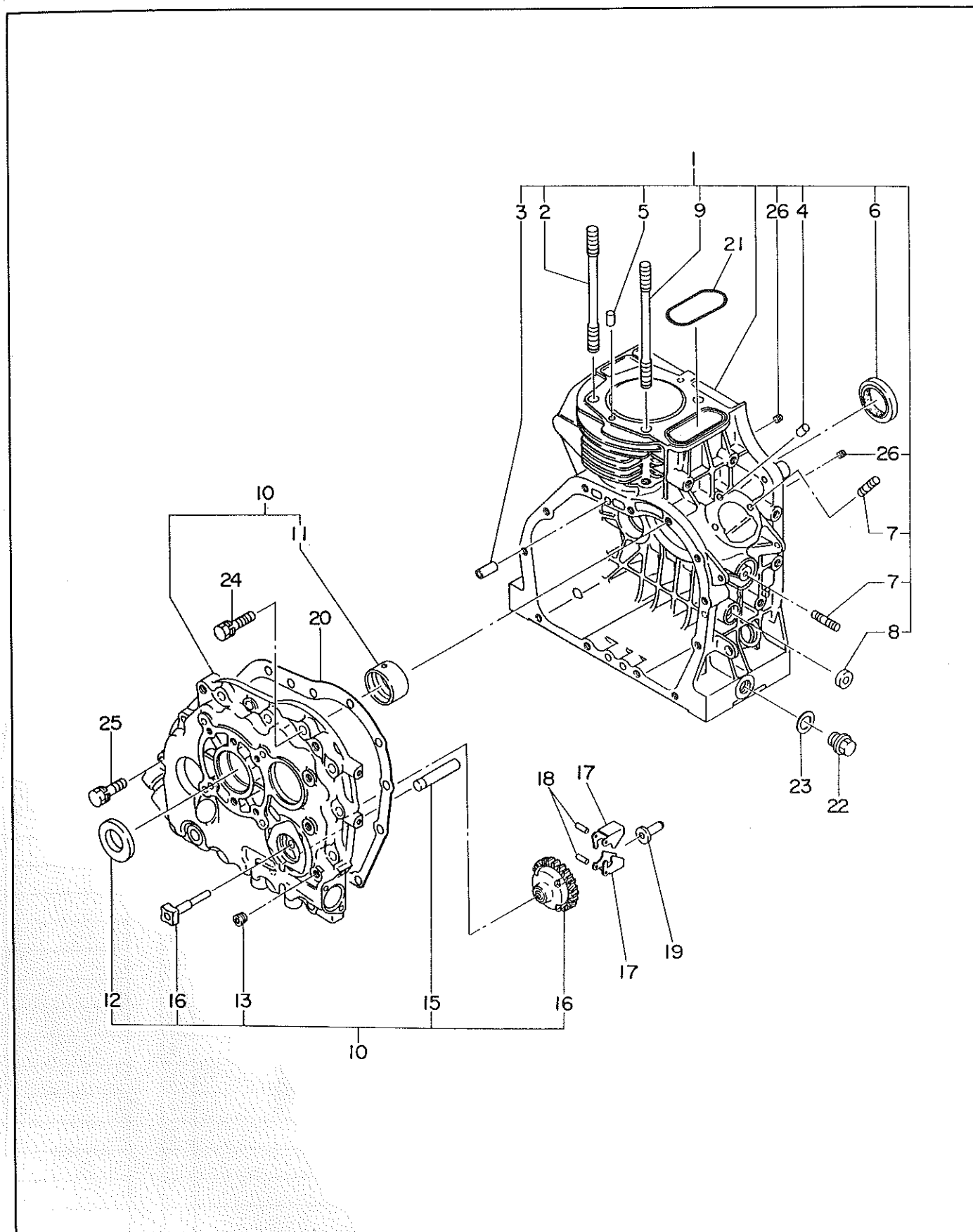


FIG. 2 CRANKCASE GROUP

Ref. No.	Parts Number	Description	Q'ty	Interchangeability	
				Execution	
*1	243-10103-01	CRANKCASE, compl. Includes items 2 thru 9 and 26	1		
2	243-16001-01	TENSION BOLT	3		
3	243-15001-03	PIPE KNOCK	2		
4	005-26051-20	DOWEL PIN	1		
5	031-00600-20	DOWEL PIN	2		
6	044-03000-30	OIL SEAL	1		
7	001-37062-21	STUD	3		
8	044-00800-30	OIL SEAL	1		
9	243-16002-01	TENSION BOLT	1		
*10	243-11002-01	MAIN BEARING COVER, compl. Includes items 11 thru 13,15 and 16	1		
11	243-15801-03	MAIN BEARING, S.T.D	1		
11	243-15802-03	MAIN BEARING, under size 0.25mm	1		
11	243-15803-03	MAIN BEARING, under size 0.50mm	1		
12	044-02501-60	OIL SEAL	1		
13	212-15008-13	BLIND PLUG	1		
15	243-64201-03	SUCTION PIPE	1		
16	243-45011-07	GOVERNOR GEAR SHAFT SET	1		
17	220-41601-03	FLYWEIGHT	2		
18	030-73000-70	PIN	2		
19	205-41901-03	GOVERNOR SLEEVE	1		
20	243-15002-03	GASKET, bearing cover	1		
21	243-15005-03	GASKET, case	1		
22	040-11400-30	PLUG	2		
23	021-11400-20	GASKET	2		
24	001-13083-50	BOLT and WASHER ASS'Y	11		
25	001-13084-00	BOLT and WASHER ASS'Y	1		
26	040-30600-10	BLIND PLUG	2		
*	243-99001-07	GASKET SET Includes items 20,21, Fig.3-7, Fig.6-6,12,13 and Fig.10-22	1		

When ordering parts : Always give the Model, Specification and Serial Number of Pump.

FIG. 3 CYLINDER HEAD GROUP

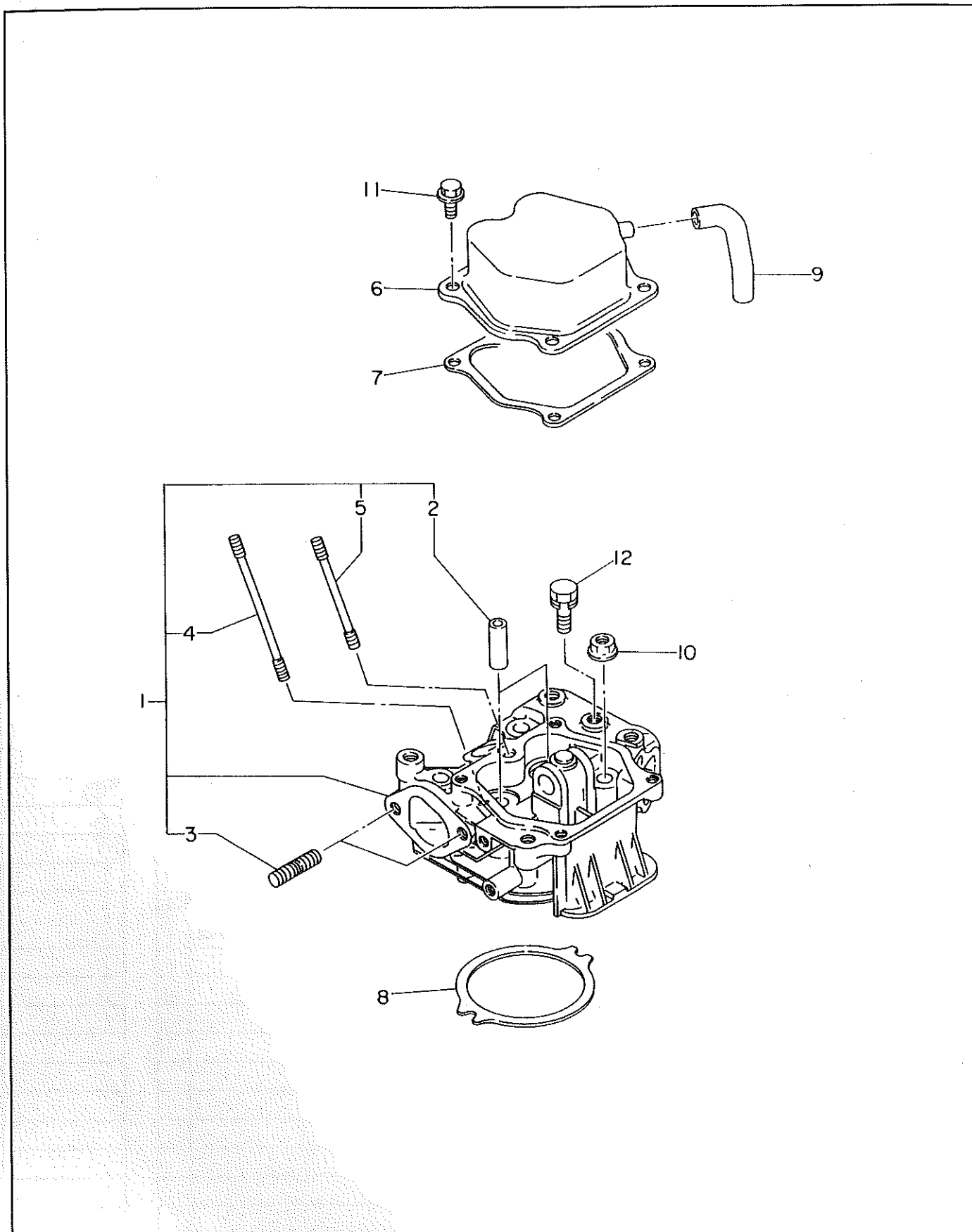


FIG. 3 CYLINDER HEAD GROUP

Ref. No.	Parts Number	Description	Q'ty	Interchangeability	
					Execution
* 1	243-13001-11	CYLINDER HEAD, compl. Includes items 2 thru 5	1		
2	243-14202-03	VALVE GUIDE	2		
3	001-37082-01	STUD	2		
4	010-50602-50	STUD	1		
5	010-50601-50	STUD	1		
6	243-17001-20	ROCKER COVER ASS'Y	1		
7	243-15010-03	GASKET, rocker cover	1		
8	243-15012-03	SPACER, head (t=0.5)	1	select one piece only	
8	243-15006-03	SPACER, head (t=0.6)	1		
8	243-15007-03	SPACER, head (t=0.7)	1		
8	243-15013-03	SPACER, head (t=0.8)	1		
9	243-15003-03	BREATHER PIPE	1		
10	018-00800-20	FLANGE NUT	4		
11	011-00600-20	FLANGE BOLT	4		
12	001-13081-20	BOLT and WASHER ASS'Y	1		

When ordering parts : Always give the Model, Specification and Serial Number of Pump.

FIG. 4 CRANKSHAFT and PISTON GROUP

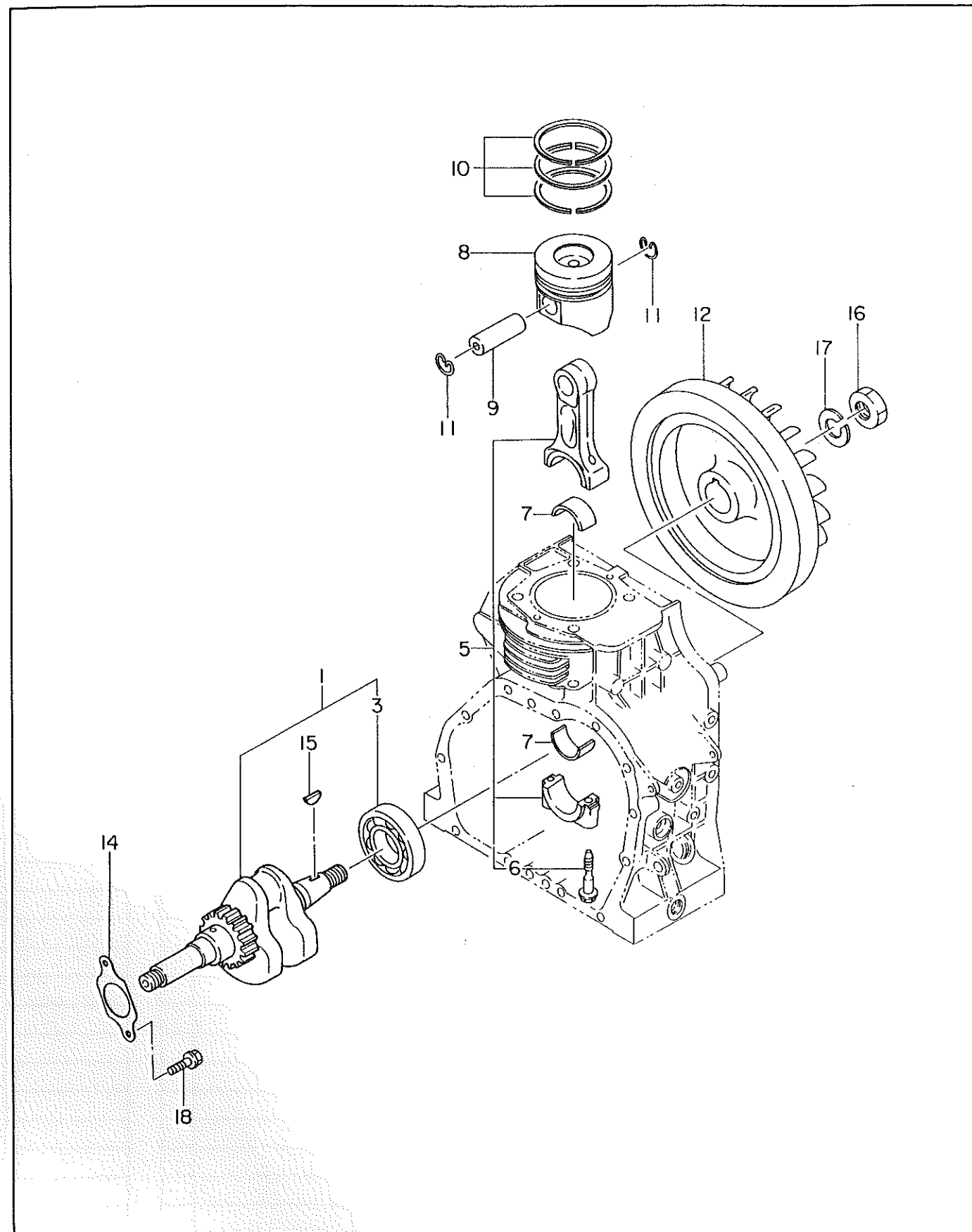


FIG. 4 CRANKSHAFT and PISTON GROUP

Ref. No.	Parts Number	Description	Interchangeability	
			Q'ty	Execution
* 1	243-20301-11	CRANKSHAFT, compl. Includes item 3	1	
3	060-03500-10	BALL BEARING	1	
* 5	243-22501-00	CONNECTING ROD ASS'Y Includes item 6	1	
6	243-23001-03	CONNECTING ROD BOLT	2	
7	243-22801-03	LARGE END BEARING, S.T.D	2	
7	243-22802-03	LARGE END BEARING, under size 0.25mm	2	
7	243-22803-03	LARGE END BEARING, under size 0.50mm	2	
8	243-23401-03	PISTON, S.T.D	1	
8	243-23402-03	PISTON, over size 0.25mm	1	
8	243-23403-03	PISTON, over size 0.50mm	1	
9	243-23301-03	PISTON PIN	1	
10	243-23501-07	PISTON RING SET, S.T.D	1	
10	243-23502-07	PISTON RING SET, over size 0.25mm	1	
10	243-23503-07	PISTON RING SET, over size 0.50mm	1	
11	056-52000-30	CLIP	2	
12	243-22410-03	FLYWHEEL	1	
14	243-25001-03	THRUST WASHER (t=0.8)	1	select one piece only
14	243-25002-03	THRUST WASHER (t=1.0)	1	
14	243-25003-03	THRUST WASHER (t=1.2)	1	
15	032-30300-10	WOODRUFF KEY	1	
16	002-18180-00	NUT	1	
17	003-20180-00	SPRING WASHER	1	
18	011-00600-10	FLANGE BOLT	2	

When ordering parts ; Always give the Model, Specification and Serial Number of Pump.

FIG. 5 CAMSHAFT and VALVE ROCKER GROUP

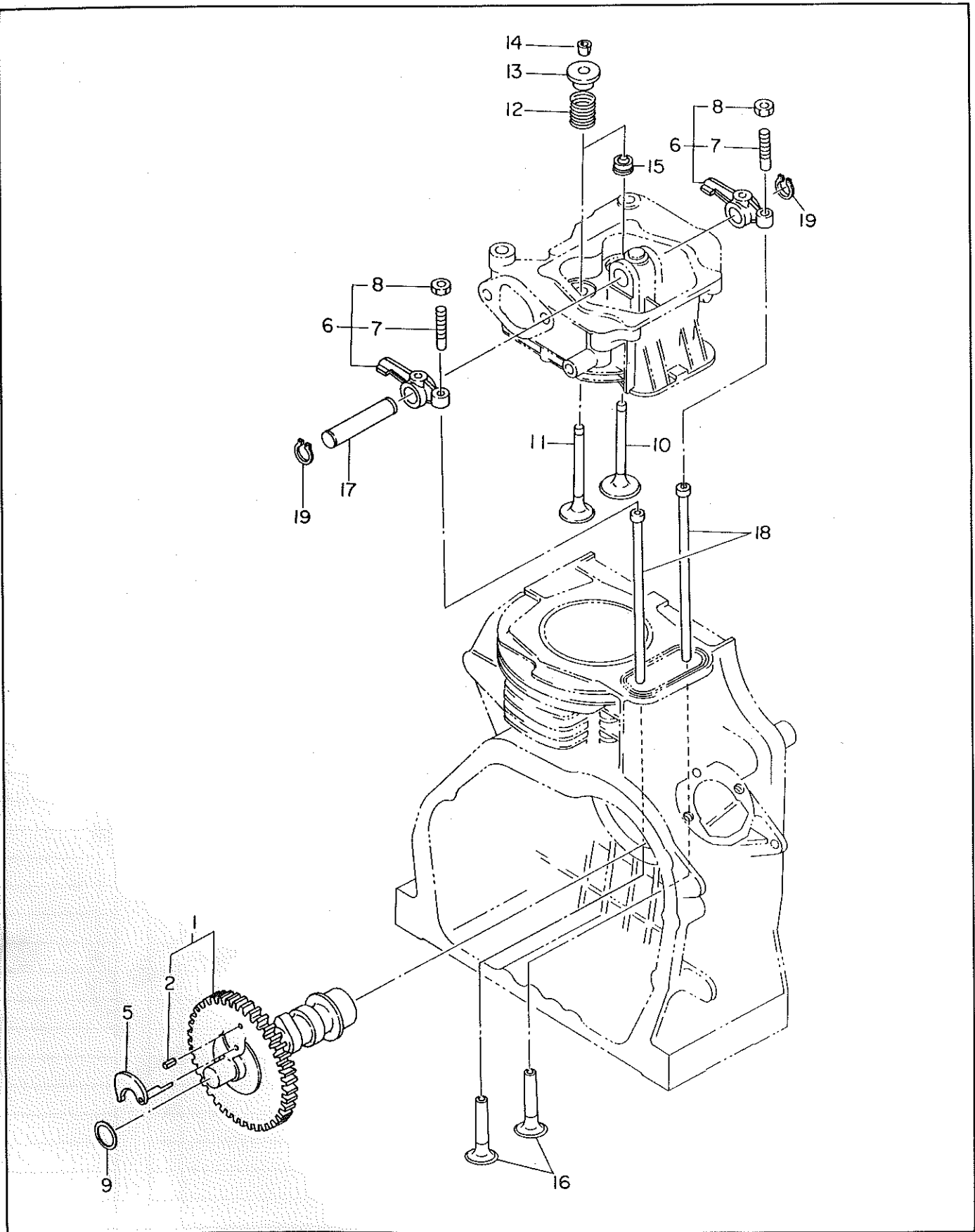


FIG. 5 CAMSHAFT and VALVE ROCKER GROUP

Ref. No.	Parts Number	Description	Interchangeability	
			Q'ty	Execution
* 1	243-31701-21	CAMSHAFT, compl. Includes item 2	1	
2	005-26081-80	DOWEL PIN	1	
5	243-35503-13	RELEASE LEVER	1	
* 6	243-36001-01	ROCKER ARM, compl. Includes items 7 and 8	2	
7	014-90600-80	ADJUSTING SCREW	2	
8	017-00600-80	NUT	2	
9	023-01600-20	SPACER (t=0.8)	} select one piece only	1
9	023-01600-31	SPACER (t=1.0)		1
10	243-33401-03	INTAKE VALVE	1	
11	243-33501-03	EXHAUST VALVE	1	
12	243-33601-03	VALVE SPRING	2	
13	243-33701-03	SPRING RETAINER	2	
14	243-33801-03	RETAINER LOCK	4	
15	237-16008-01	STEM SEAL	1	
16	243-33301-03	TAPPET	2	
17	243-35001-03	ROCKER SHAFT	1	
18	243-35004-03	PUSH ROD	2	
19	003-15120-00	SNAP RING	2	

When ordering parts ; Always give the Model, Specification and Serial Number of Pump.

FIG. 6 AIR CLEANER and MUFFLER GROUP

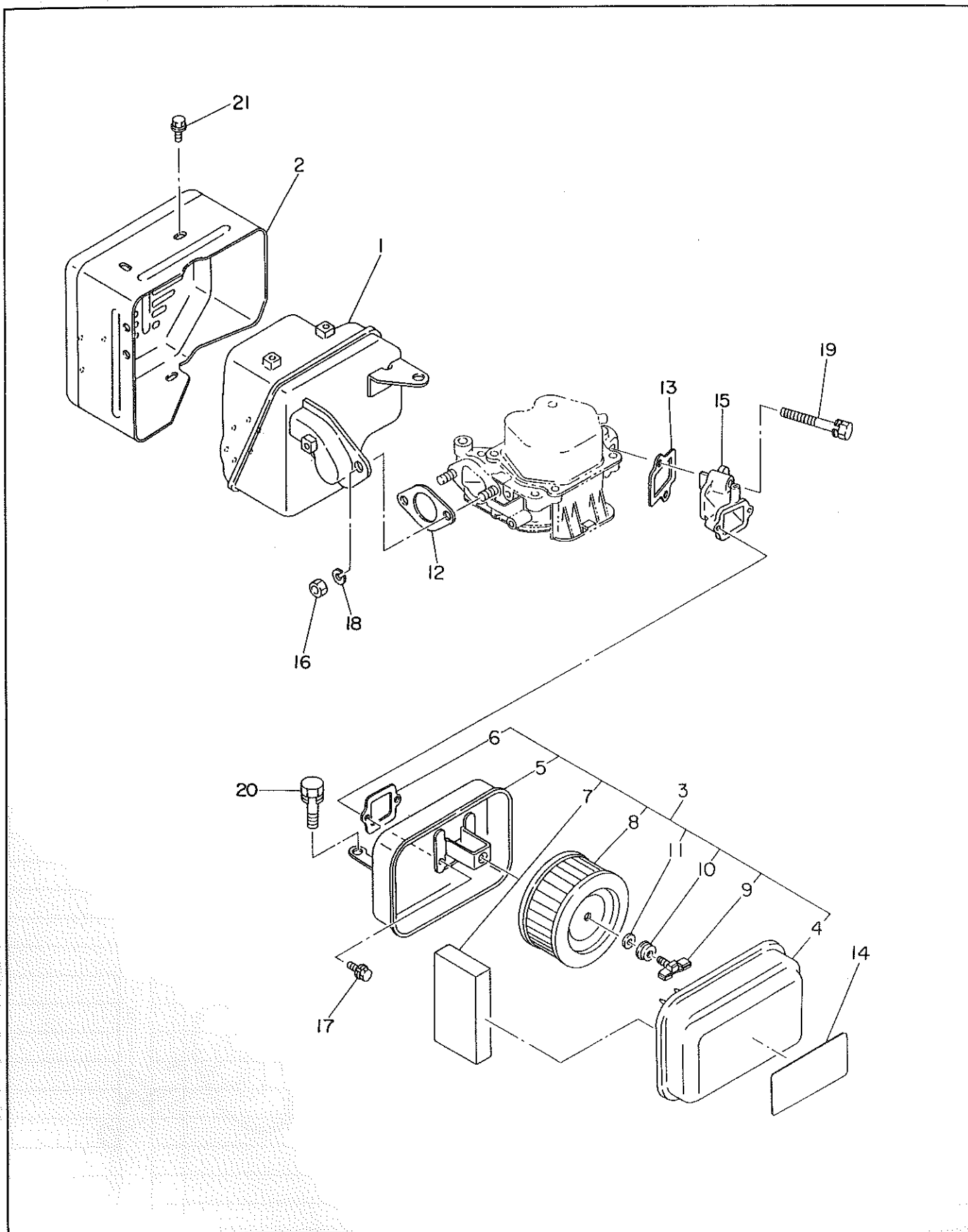


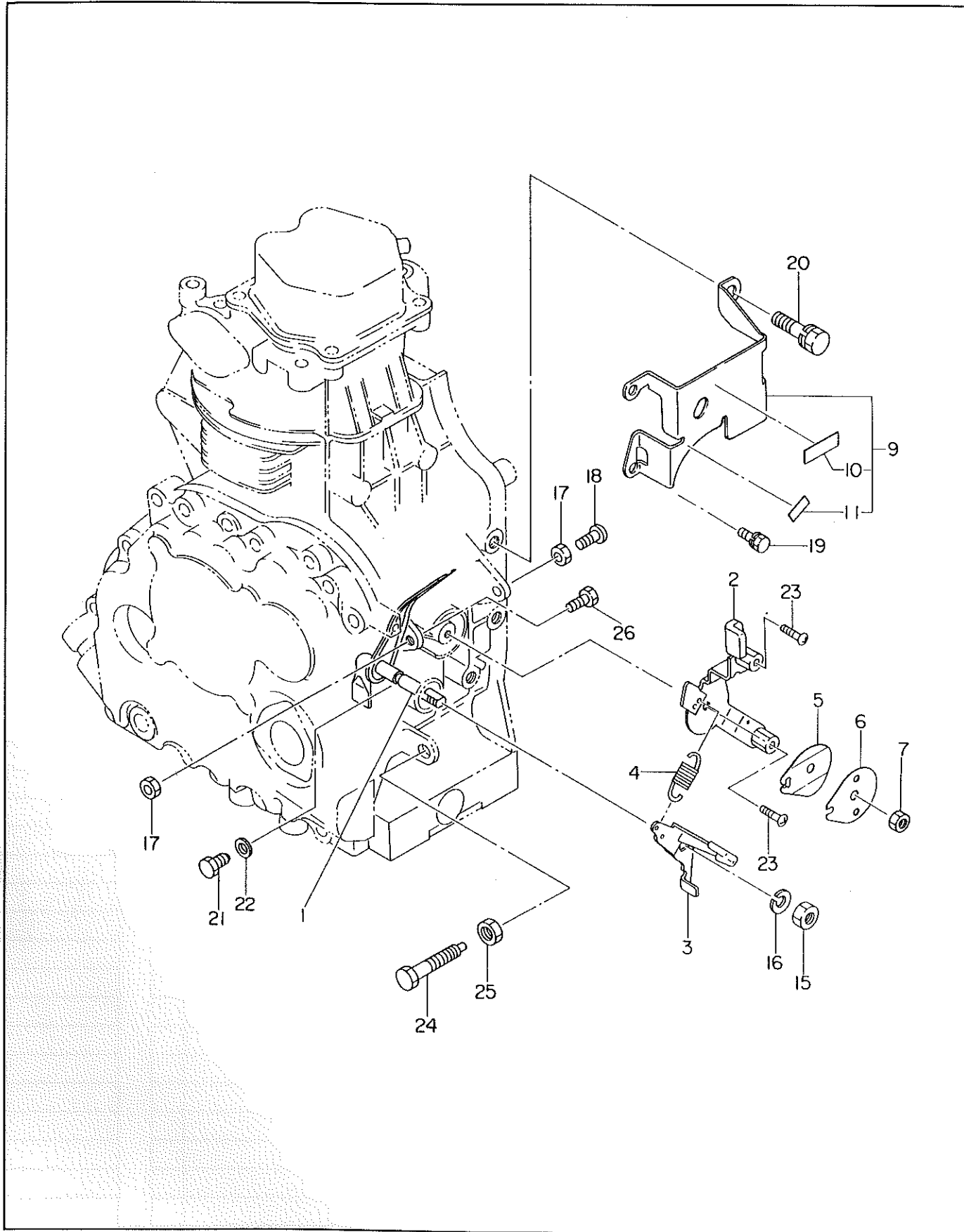
FIG. 6 AIR CLEANER and MUFFLER GROUP

Ref. No.	Parts Number	Description	Interchangeability	
			Q'ty	Execution
1	243-30101-21	MUFFLER, compl.	1	
2	243-34201-01	MUFFLER COVER	1	
* 3	243-32601-00	AIR CLEANER ASS'Y Includes items 4 thru 11	1	
4	243-32640-08	COVER, compl.	1	
* 5	243-32620-08	BACK PLATE, compl. Includes item 6	1	
6	243-32651-08	PACKING	1	
7	243-32611-08	ELEMENT	1	
8	243-32600-08	ELEMENT, compl.	1	
9	243-32670-08	WING BOLT	1	
10	243-32660-08	WASHER	1	
11	243-32650-08	PACKING	1	
12	243-35002-03	GASKET, exhaust	1	
13	243-35003-13	GASKET, intake manifold	1	
14	243-92302-03	LABEL, air cleaner	1	
15	243-33101-03	INTAKE MANIFOLD	1	
16	002-19080-00	NUT	2	
17	001-13061-20	BOLT and WASHER ASS'Y	2	
18	003-20080-00	SPRING WASHER	2	
19	001-13083-50	BOLT and WASHER ASS'Y	2	
20	001-13081-60	BOLT and WASHER ASS'Y	1	
21	001-10061-00	BOLT and WASHER ASS'Y	4	

When ordering parts : Always give the Model, Specification and Serial Number of Pump.



**FIG. 7 GOVERNOR OPERATION GROUP**



**FIG. 7 GOVERNOR OPERATION GROUP**

Ref. No.	Parts Number	Description	Q'ty	Interchangeability	
					Execution
1	243-42301-02	GOVERNOR LEVER UNIT	1		
2	243-43301-10	SPEED CONTROL ASS'Y	1		
3	243-42902-11	CONTROL LINK, compl.	1		
4	243-42502-03	GOVERNOR SPRING	1		
5	227-45002-03	SPRING WASHER	1		
6	227-43501-01	STOP PLATE	1		
7	017-60600-30	SELF LOCK NUT	1		
* 9	243-40166-01	CONTROL PANEL, compl. Includes items 10 and 11	1		
10	243-92101-03	LABEL, operation	1		
11	243-92102-03	LABEL, operation	1		
15	002-18080-00	NUT	1		
16	003-20080-00	SPRING WASHER	1		
17	002-18060-00	NUT	2		
18	004-31063-00	SCREW	1		
19	001-13061-20	BOLT and WASHER ASS'Y	2		
20	001-13081-60	BOLT and WASHER ASS'Y	2		
21	243-45002-03	BOLT	1		
22	003-10060-00	WASHER	1		
24	243-45501-10	SMOKE SET ASS'Y	1		
25	002-24100-00	NUT	1		
26	010-30600-20	BOLT	1		

When ordering parts : Always give the Model, Specification and Serial Number of Pump.

FIG. 8 BLOWER HOUSING and RECOIL STARTER GROUP

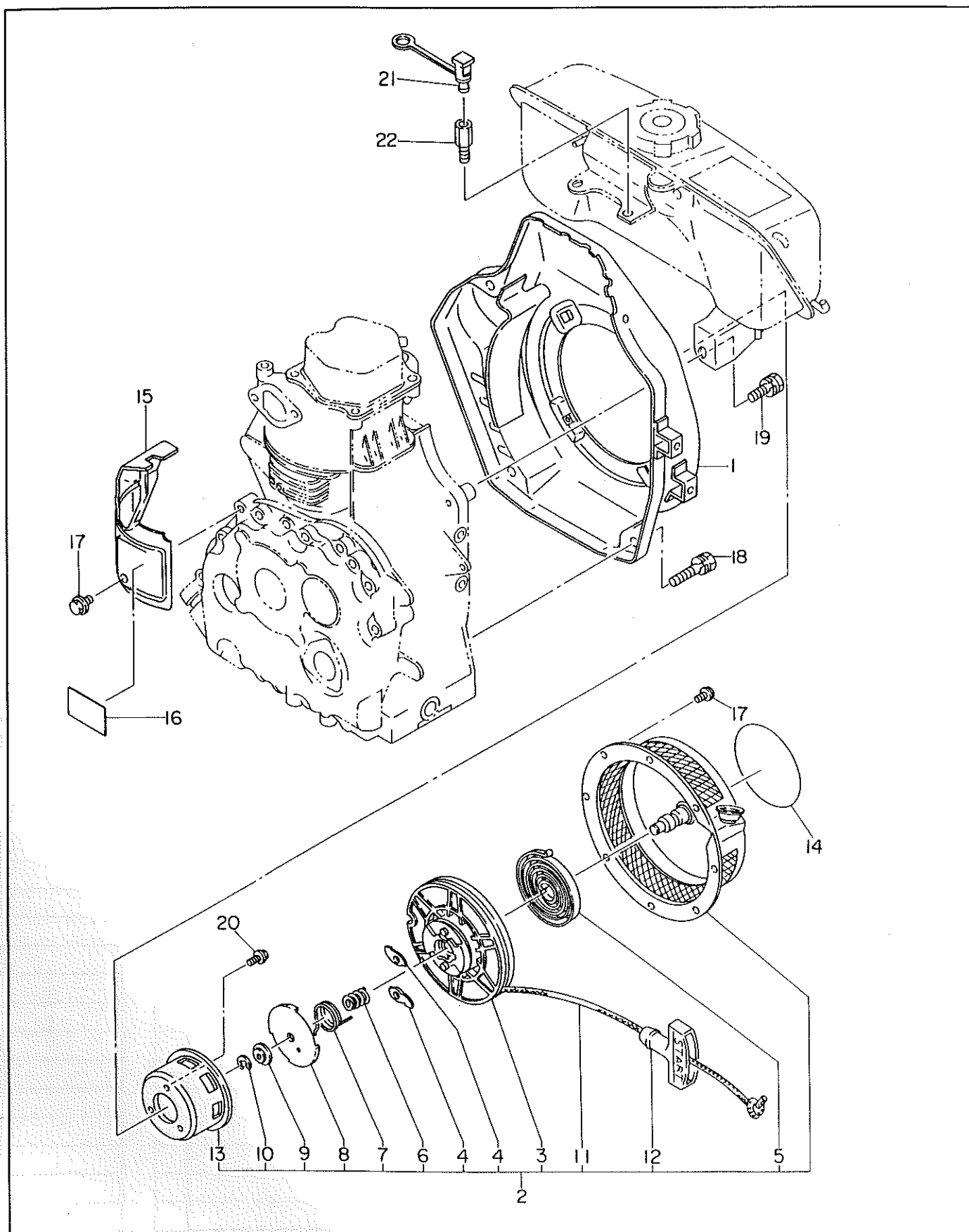


FIG. 8 BLOWER HOUSING and RECOIL STARTER GROUP

				Interchangeability	
Ref. No.	Parts Number	Description	Q'ty	↙	Execution
1	243-51202-01	BLOWER HOUSING, compl.	1		
*2	243-50201-10	RECOIL STARTER ASS'Y Includes items 3 thru 13	1		
3	239-50220-08	REEL, compl.	1		
4	106-50128-18	RATCHET	2		
5	106-50116-08	SPIRAL SPRING	1		
6	106-50132-08	FRICTION SPRING	1		
7	106-50136-18	RETURN SPRING	1		
8	106-50144-18	FRICTION PLATE	1		
9	106-50185-18	THRUST WASHER	1		
10	106-50186-08	CLIP	1		
11	243-50110-08	STARTER ROPE	1		
12	236-50100-08	STARTER KNOB	1		
13	243-50145-08	STARTING PULLEY	1		
14	243-95004-03	LABEL, diesel mark	1		
15	243-52601-23	CYLINDER BAFFLE	1		
16	243-91803-03	LABEL, engine name	1		
17	011-00600-10	FLANGE BOLT	5		
18	001-13083-00	BOLT and WASHER ASS'Y	2		
19	001-13082-00	BOLT and WASHER ASS'Y	2		
20	001-13061-20	BOLT and WASHER ASS'Y	3		
21	243-55001-13	PLUG	1		
22	243-55002-01	BOLT	1		

When ordering parts ; Always give the Model, Specification and Serial Number of Pump.

FIG. 9 FUEL TANK GROUP

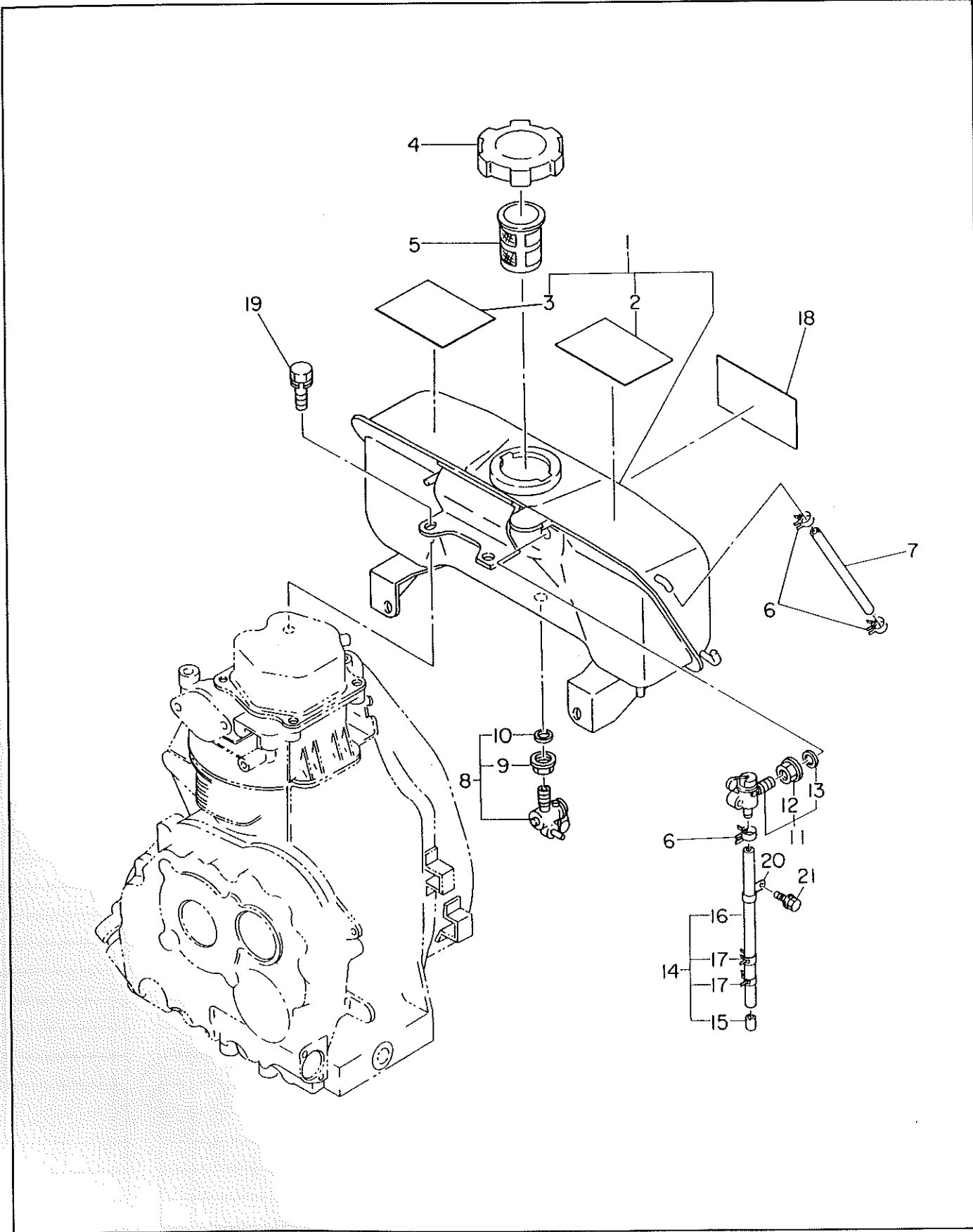


FIG. 9 FUEL TANK GROUP

Ref. No.	Parts Number	Description	Interchangeability	
			Q'ty	Execution
*1	243-60104-11	FUEL TANK, compl. Includes items 2 and 3	1	
2	243-91902-03	LABEL, instruction	1	
3	243-92002-03	LABEL, caution	1	
4	043-04300-15	FUEL TANK CAP, compl.	1	
5	064-13600-10	FUEL FILTER	1	
6	056-10800-10	HOSE CLAMP	3	
7	085-00500-00	VINYL PIPE (5φ×8φ×120mm)	1	
*8	243-66501-00	FUEL COCK ASS'Y Includes items 9 and 10	1	
9	243-66505-18	NUT	1	
10	243-66506-08	RUBBER PACKING	1	
*11	243-66510-00	AIR COCK ASS'Y Includes items 12 and 13	1	
12	243-66505-18	NUT	1	
13	243-66506-08	RUBBER PACKING	1	
*14	243-62601-01	FUEL PIPE 1, compl. Includes items 15 thru 17	1	
15	243-65005-03	PIPE	1	
16	085-10400-00	RUBBER PIPE (4.5φ×9φ×160mm)	1	
17	056-10800-10	HOSE CLAMP	2	
18	243-91720-03	LABEL, trade mark	1	
19	001-13082-00	BOLT and WASHER ASS'Y	1	
20	150-75201-03	CLAMP	1	
21	001-10061-00	BOLT and WASHER ASS'Y	1	

When ordering parts : Always give the Model, Specification and Serial Number of Pump.

FIG. 10 FUEL SYSTEM GROUP

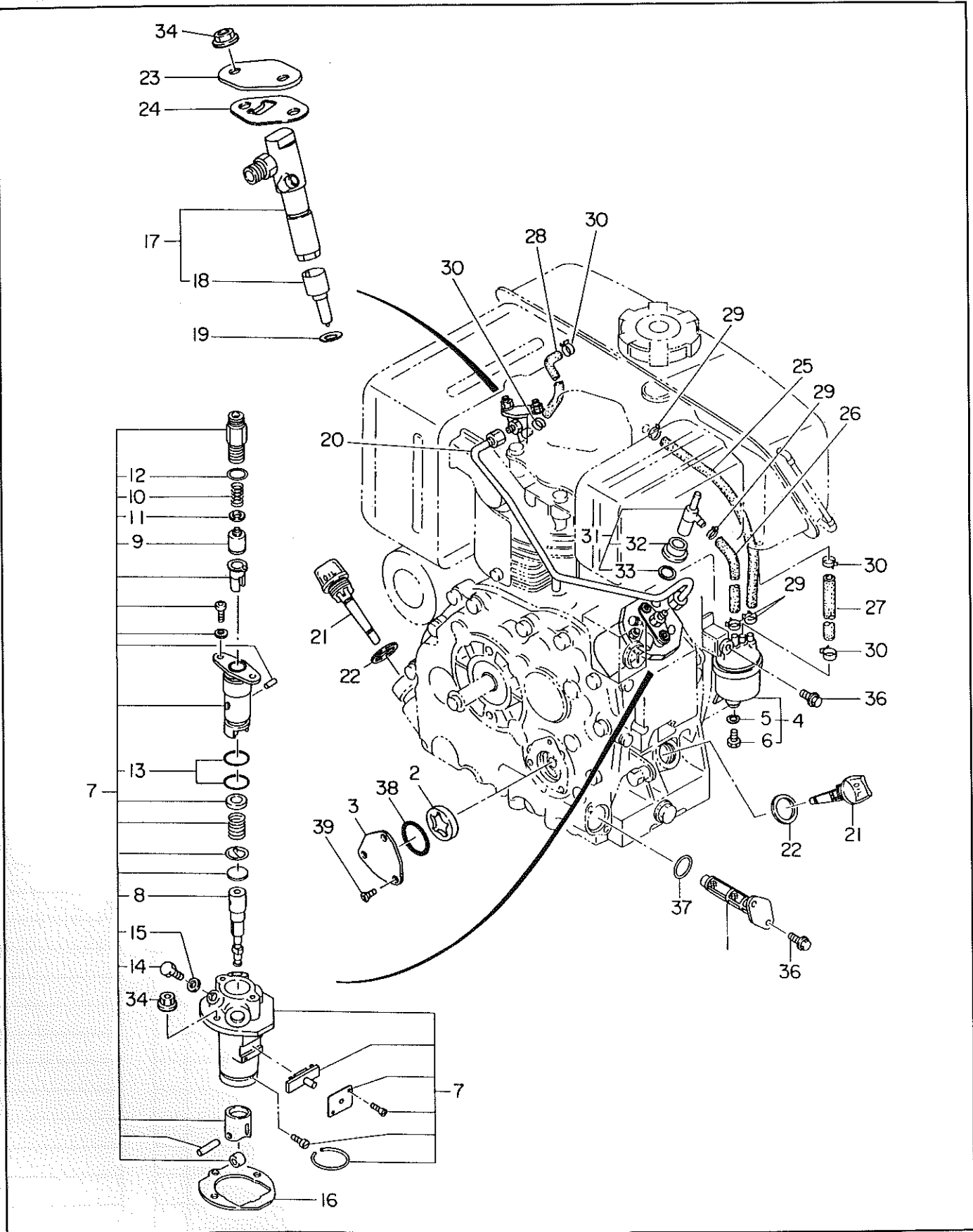


FIG. 10 FUEL SYSTEM GROUP

Ref. No.	Parts Number	Description	Q'ty	Interchangeability	Execution
1	243-64301-00	OIL FILTER ASS'Y	1		
2	228-63902-03	OIL PUMP, outer	1		
3	243-66020-01	COVER, oil pump	1		
*4	243-62101-10	FUEL FILTER ASS'Y	1	Includes items 5 and 6	
5	228-62112-08	PACKING	1		
6	228-62111-08	PLUG	1		
*7	243-63101-10	INJECTION PUMP ASS'Y	1	Includes items 8 thru 15	
8	243-63102-08	PLUNGER ASS'Y	1		
9	243-63103-08	DELIVARY VALVE	1		
10	243-63104-08	SPRING D.V.	1		
11	243-63105-08	GASKET	1		
12	243-63107-08	"O"RING	1		
13	243-63110-08	"O"RING	2		
14	243-63124-08	BOLT	1		
15	243-63125-08	GASKET	1		
16	243-65001-03	GASKET, injection pump (t=0.1)	1		
16	243-65002-03	GASKET, injection pump (t=0.2)	1	select one	
16	243-65003-03	GASKET, injection pump (t=0.3)	1	piece only	
*17	243-63201-00	NOZZLE ASS'Y	1	Includes item 18	
18	243-63204-08	NOZZLE	1		
19	228-65004-03	GASKET, nozzle	1		
20	243-63301-01	INJECTION PIPE, compl.	1		
21	224-63601-03	OIL GAUGE	2		
22	021-32000-10	GASKET	2		
23	243-66001-01	BRACKET, nozzle 1	1		
24	243-66010-03	BRACKET, nozzle 2	1		
25	085-10600-00	RUBBER PIPE (6φ×12φ×175mm)	1		
26	085-10600-00	RUBBER PIPE (6φ×12φ×120mm)	1		
27	085-10400-00	RUBBER PIPE (4.5φ×9φ×85mm)	1		
28	085-10400-00	RUBBER PIPE (4.5φ×9φ×135mm)	1		
29	056-11100-20	HOSE CLAMP	4		
30	056-10800-10	HOSE CLAMP	4		
*31	243-66520-00	T-CONNECTOR ASS'Y	1	Includes items 32 and 33	
32	243-66521-08	NUT	1		
33	243-66506-08	PACKING	1		
34	002-38060-00	FLANGE NUT	4		
36	011-00600-20	FLANGE BOLT	4		
37	006-26202-00	"O"RING	1		
38	006-26103-30	"O"RING	1		
39	004-11061-60	SCREW	3		

When ordering parts ; Always give the Model, Specification and Serial Number of Pump.

FIG. 11 ACCESSORIES GROUP

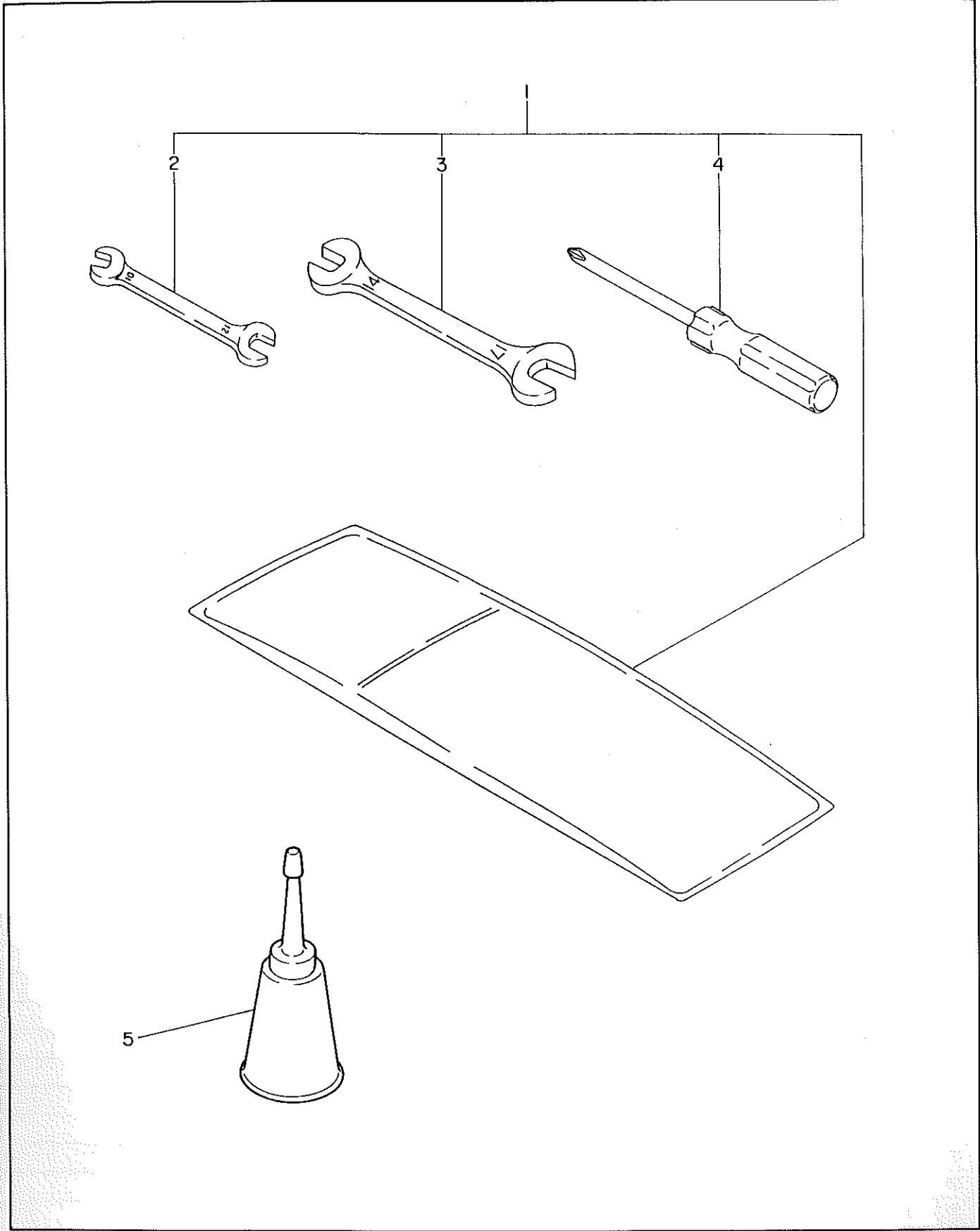


FIG. 11 ACCESSORIES GROUP

Ref. No.	Parts Number	Description	Q'ty	Interchangeability	Execution
* 1	243-90301-00	ACCESSORY TOOLS KIT Includes items 1 thru 4	1		
5	243-65006-00	OIL FEEDER ASS'Y	1		

When ordering parts : Always give the Model, Specification and Serial Number of Pump.