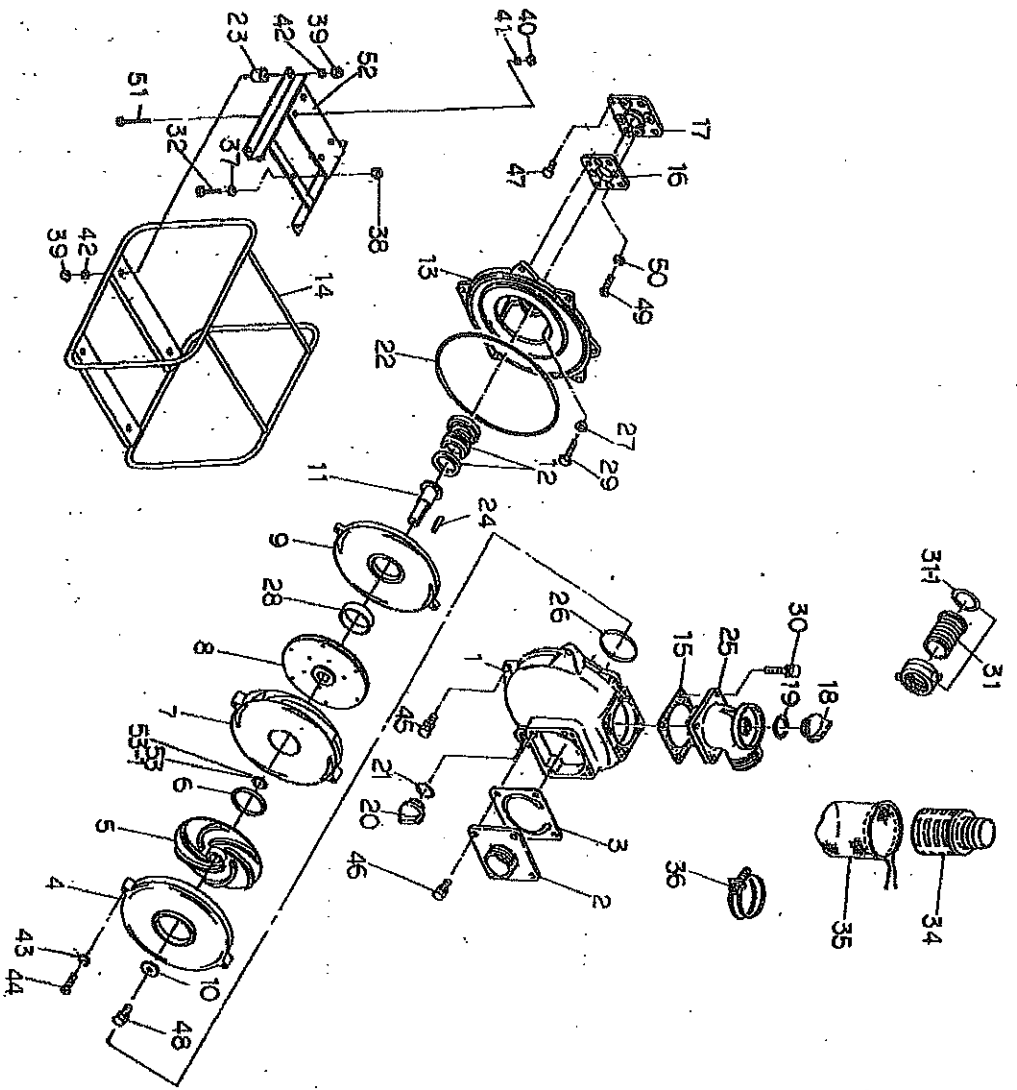
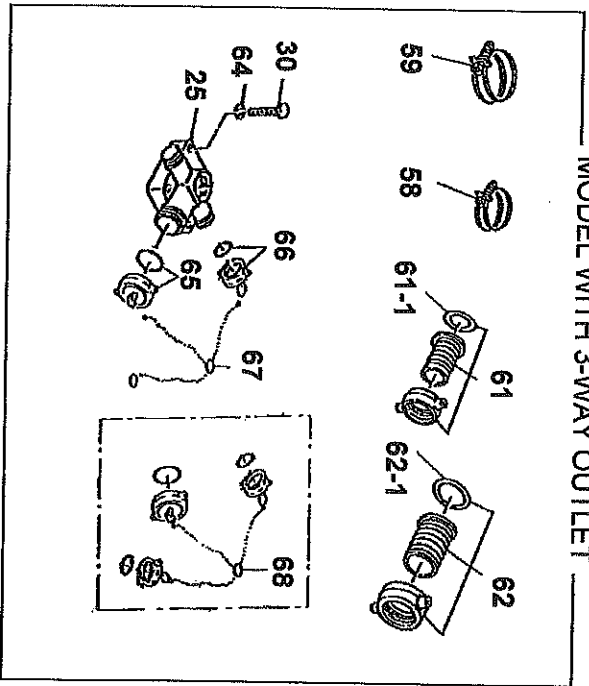


CGP-250HPT/2x2



MODEL WITH 3-WAY OUTLET



CGP-250HPT/2 X 2

CODE NO	PARTS NO.	PARTS NAME	QTY	MATERIAL	SPECIFICATION
		ENGINE			EX270D
1	1878-100010B	CASING	1	ADC	
2	1803-100160	SUCTION COVER	1	ADC	PT
3	1878-380360	CHECK VALVE	1	NBR+SS400	
4	1878-060130	VOLUTE CASING	1	AC	
5	1878-000040	IMPELLER 2	1	FC	
6	1878-081280	LINER RING 2	1	BC	
7	1878-060110	VOLUTE CASING 2	1	AC	
8	1878-060030	IMPELLER SET	1	AC	
9	1878-060120	VOLUTE CASING 3	1	AC	
10	4359-201240-0011	IMPELLER WASHER	1	SS400	
11	1878-221010	PUMP SHAFT	1	S4BC	
12	08061-1-3325	MECHANICAL SEAL	1	CERAMIC	25 φ HK9A-LN
13	2287-100020	CASING COVER - 28144B	1	ADC	
14	1867-214010-0004	BASE	1	SS400	
15	1803-330360	DELIVERY COVER PACKING	1	NBR	
16	1869-000600-0011	CASING COVER SET PLATE -A	1	FC	
17	1389-000630-0011	CASING COVER SET PLATE -B	1	FC	
18	063121-1100ASSY	FLOODING CAP WITH O-RING	1	ABS	
19	048035-0300	O-RING (FLOODING CAP)	1	NBR	
20	063121-1100ASSY	DRAIN CAP WITH O-RING	1	ABS	
21	048035-0300	O-RING (DRAIN CAP)	1	NBR	
22	048935-2550	O-RING (CASING)	1	NBR	φ 3.5* φ 255
23	072330-2040	CUSHION RUBBER	4	NBR+SS400	φ 40 X 20 M10
24	051004-0443	KEY	1	S45C	
25	1803-000090-0011	DELIVERY ELBOW	1	FC	
26	048220-0750	O-RING (VOLUTE CASING)	1	NBR	
27	045822-0080	SEAL WASHER	4	SUS+NBR	
28	1803-521220	LINER RING	1	DURACON	φ 59x52x15

CODE NO	PARTS NO.	PARTS NAME	QTY	MATERIAL	SPECIFICATION
29	010505-0820	BOLT	4	SS400	M8x20
30	018105-0825	BOLT SET WITH SPRING WASHER	4	SS400	M8x25
31	07411-7050R	HOSE COUPLING SET	2	ADC	2" P.F
31-1	07413-1-0501	HOSE COUPLING PACKING	2	NBR	
32	010505-0850	BOLT	1	SS400	M8x50
34	074280-1050R	STRAINER	1	PE	
35	092031-2013	NYLON NET	1	NYLON	
36	093225-2000	WIRE HOSE BAND	3	SWRM	2"
37	045125-0080	SPRING WASHER	1	SWRH	M8
38	020545-0080	NUT	1	SS400	M8
39	020545-0100	NUT	8	SS400	M10
40	020545-0100	NUT	4	SS400	M10
41	045125-0100	SPRING WASHER	4	SWRH	M10
42	045125-0100	SPRING WASHER	8	SWRH	M10
43	045125-0060	SPRING WASHER	2	SWRH	M6
44	010509-0840	BOLT	2	SUS	M6x40
45	018105-0825	BOLT SET WITH SPRING WASHER	6	SS400	M8x25
46	018105-0825	BOLT SET WITH SPRING WASHER	4	SS400	M8x25
47	018105-0820	BOLT SET WITH SPRING WASHER	4	SS400	M8x20
48	018105-0820	BOLT SET WITH SPRING WASHER	1	SS400	M8x20
49	014105-0815	SCREW	4	SS400	M8x15
50	045125-0080	SPRING WASHER	4	SWRH	M8
51	010505-1045	BOLT	4	SS400	M10x45
52	1867-214021-0004	ENGINE BASE	1	SS400	
53	085283-4230	ADJUST LINER	1	BSP	42x30x0.3T
53-1	085285-4230	ADJUST LINER	1	BSP	42x30x0.5T